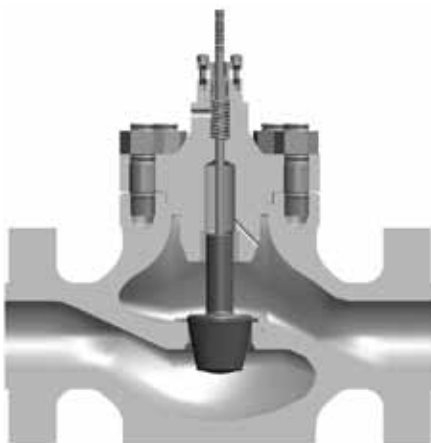




GVPC **Model**

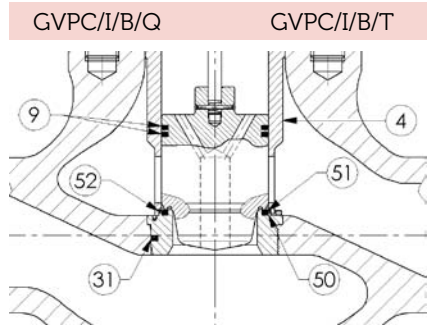
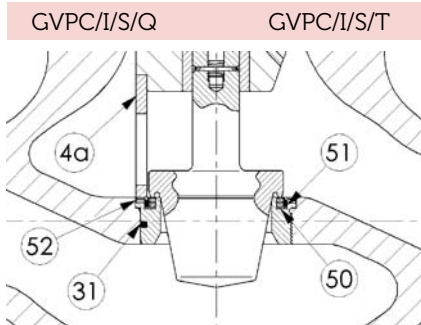
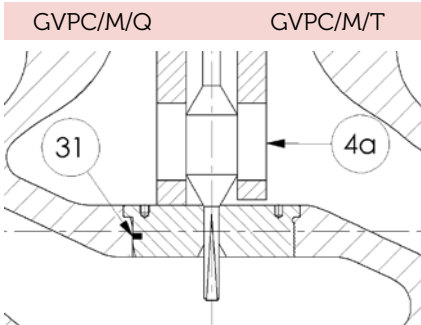
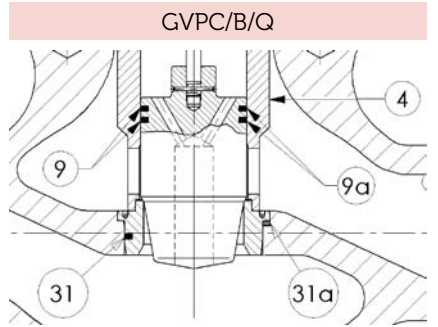
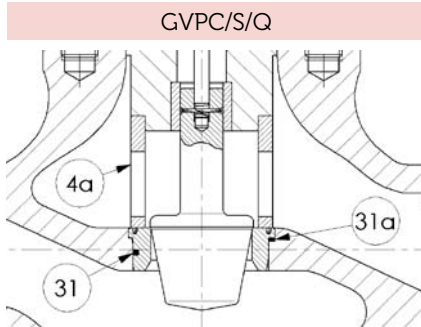
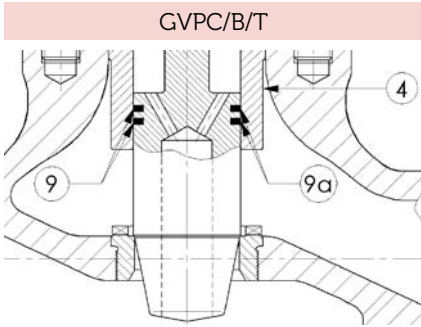
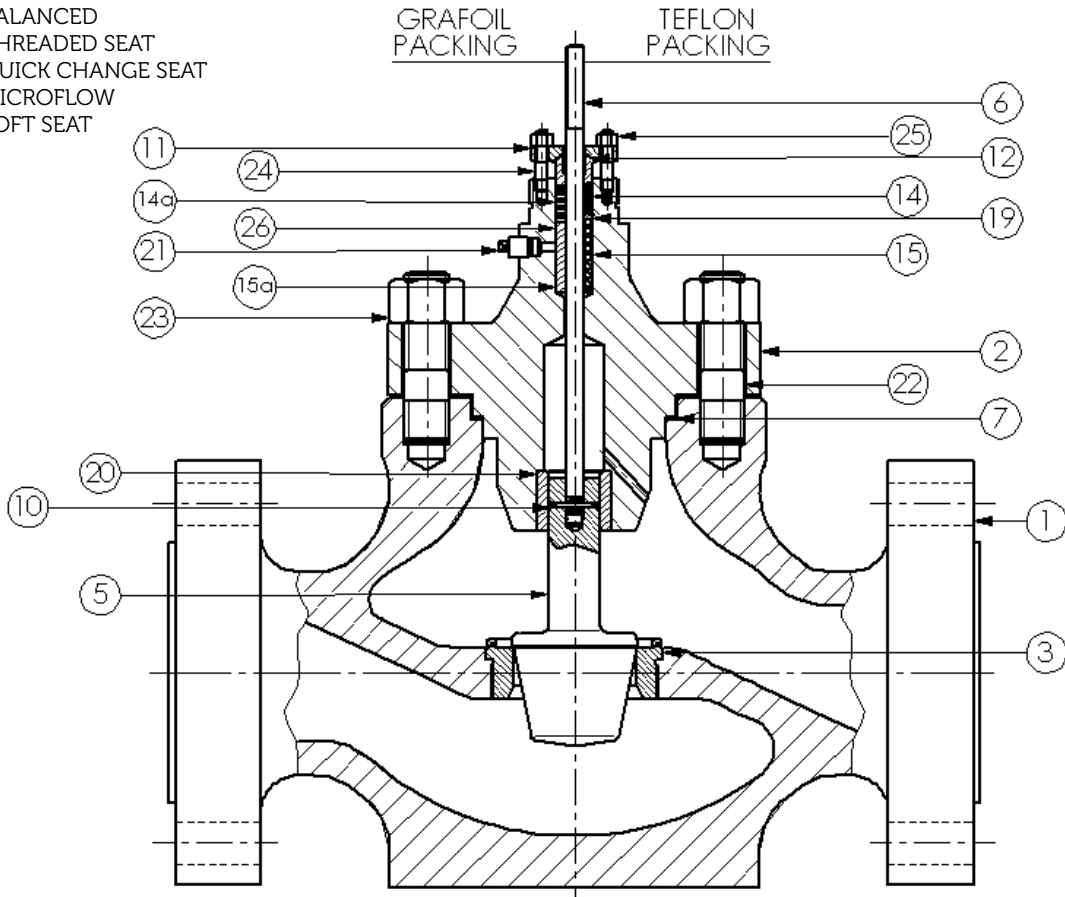
GVPC Model



GVPC/S/T

GVPC
GLOBE VALVE CONTOURED TRIM

- S - STANDARD
- B - BALANCED
- T - THREADED SEAT
- Q - QUICK CHANGE SEAT
- M - MICROFLOW
- I - SOFT SEAT



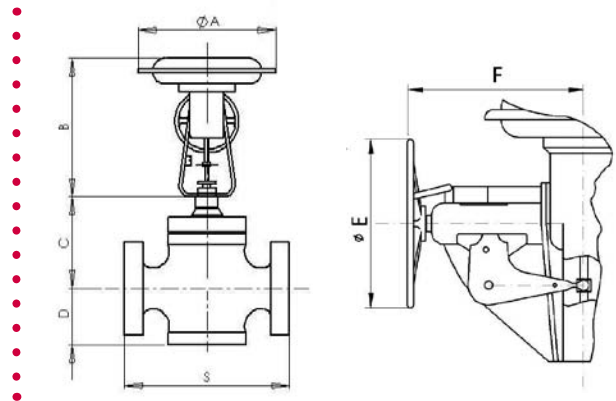
STANDARD MATERIALS		CONFIGURATIONS					
POS.	ITEM	1	2	3	4	5	6
1	BODY	A216WCB	A352LCB	A217WC6	A217WC9	A351CF8	A351CF8M
2	BONNET	A105	A350LF2	A182F11	A182F22	A182F304	A182F316
3	SEAT	TO CHOOSE ACCORDING TO DATA PROCESS AND TRIM MATERIALS TABLE, CONFIGURATIONS FROM "A" TO "F"					
4	BALANCING CYLINDER						
4a	SPACER						
5	PLUG						
6	STEM						
7	BODY-BONNET GASKET						
9	BALANCING RING	LOADED TEFLON + OR VITON (T ≤ 210 °C)					
9a		FULL GRAPHITE / CA6NM NITR.					
10	PIN	S.S. 304/316					
11	GLAND FLANGE	A105				S.S. 304	
12	GLAND	S.S.304/316					
14	PACKING *	TEFLON (T ≤ 210 °C)					
14a		GRAFOIL (T ≤ 560 °C)					
15	SPRING	S.S. 316					
15a	PACKING SPACER	S.S. 304					
19	LOWER ADAPTER RING	S.S. 304					
20	BUSHING	S.S. 440C H.T.				S.S. 17-4 PH	
21	BONNET PLUG	A105				S.S. 304	
22	BODY-BONNET STUDS	A193 Gr. B7	A193 Gr.B8 Cl.1	A193 Gr. B16		A193 Gr.B8 Cl.1	
23	BODY-BONNET NUTS	A194 Gr. 2H	A194 Gr. 8	A194 Gr. 2H		A194 Gr. 8	
24	GLAND FLANGE STUDS	A193 Gr. B7				A193 Gr.B8 Cl.1	
25	GLAND FLANGE NUTS	A194 Gr. 2H				A194 Gr. 8	
26	ANTIEXTRUSION RING	GRAPHITE (T ≤ 560 °C)					
31	SEAT GASKET	LOADED TEFLON + OR VITON (T ≤ 210 °C)					
31a		GRAPHITE (T ≤ 560 °C)					
50	SOFT INSERT	TEFLON DuPONT *					
51	RING	S.S. 304/316					
52	SCREWS	S.S. 304/316					
TRIM MATERIALS		CONFIGURATIONS					
		A	B	C	D	E	F
3	SEAT	S.S. 316	S.S. 316+STELL. **	S.S. 316 + SHEET STEEL. **	S.S. 316+STELL. **	S.S. 17-4 PH H900	S.S. 17-4 PH H900
4	BALANCING CYLINDER	-	-	-	S.S. 316	-	S.S. 17-4 PH H1150
4a	SPACER	-	-	-	S.S. 316	-	S.S. 17-4 PH H1150
5	PLUG	S.S. 316	S.S. 316+STELL. **	S.S. 316 + SHEET STEEL. **	S.S. 316 + SHEET STEEL. **	S.S. 17-4 PH H900	S.S. 17-4 PH H900
6	STEM	S.S. 316	S.S. 316	S.S. 316	S.S. 316	S.S. 17-4 PH H900	S.S. 17-4 PH H900

NOTES : * DOUBLE PACKING (TEFLON AND GRAFOIL) AND FOR UNDERVACUUM SERVICE ALSO AVAILABLE
 ** : STELLITE HAYNES Gr. 6

Materials according to NACE, UOP, EXXON and other applications are also available on request.

OVERALL DIMENSIONS																
VALVE NPS [in]	ACTUATOR	STROKE [mm]	φA [mm]	B [mm]		C [mm]		D [mm]	φE [mm]	F [mm]	S [mm] (ACC. TO ANSI-ISA 75.08.01)					
				DIRECT	REVERSE	STD	EXTEND.				ANSI 150		ANSI 300		ANSI 600	
											RF	RJ	RF	RJ	RF	RJ
3/4	11 (N)	25	330	420	500	180	260	67	255	270	184	197	194	206	206	206
	13 (N+1)		382	560	670				400	380						
1	11 (N)	25	330	420	500	180	260	67	255	270	184	197	197	210	210	210
	13 (N+1)		382	560	670				400	380						
1 1/2	11 (N)	25	330	420	500	180	260	83	255	270	223	235	235	248	251	251
	13 (N+1)		382	560	670				400	380						
2	11 (N)	25	330	420	500	180	260	86	255	270	254	267	267	282	286	289
	13 (N+1)		382	560	670				400	380						
3	13 (N)	40	382	560	670	230	310	111	400	380	299	311	318	333	337	340
	18 (N+1)		532	740	890				570	420						
4	13 (N)	40	382	560	670	230	310	146	400	380	352	365	368	384	394	397
	18 (N+1)		532	740	890				570	420						
6	18 (N)	60	532	740	890	280	360	171	570	420	451	464	473	489	508	511
	24 (N+1)		640	1050	1270				910	740						
8	18 (N)	60	532	740	890	315	415	203	570	420	543	556	568	584	610	613
	24 (N+1)		640	1050	1270				910	740						
10	18L (N)	80	532	990	1175	390	490	238	910	740	673	686	708	724	752	755
	24 (N+1)		640	1050	1270				910	740						
12	18L (N)	80	532	990	1175	390	490	251	910	740	737	749	775	790	819	822
	24 (N+1)		640	1050	1270				910	740						
14	24 (N)	100	640	1050	1270	550	650	292	910	740	890	902	927	943	972	975
16	24 (N)	100	640	1050	1270	680	780	352	910	740	1016	1029	1057	1073	1108	1111

Electrical and electro-pneumatic actuators also available on request.

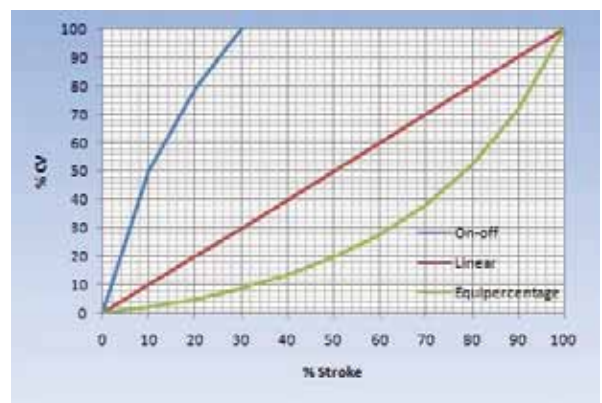


FLOW RATE COEFFICIENTS - CV - GVPC									
VALVE NPS [in]	STROKE [mm]	TRIM DIMENSIONS [in]	ANSI 150-300-600			ANSI 900-1500-2500			
			SEAT DIAMETER [mm]	Quick opening	CV Equip./Linear	SEAT DIAMETER [mm]	Quick opening	CV Equip./Linear	
1	25	1	24	16	13	19	10*	8*	
		3/4	19	10	8	15	8	6,5	
		1/2	15	8	6,5	11	5	4,2	
		3/8	11	5	4,2	9	3,5	2,9	
		1/4	9	3,5	2,9	6	2	1,5	
1-1/2	25	1-1/2	38	36	30	32	30	25	
		1-1/4	32	30	25	24	16	13	
		1	24	16	13	19	10	8	
		3/4	19	10	8	15	8	6,5	
		1/2	15	8	6,5	11	5	4,2	
2	25	2	47	59	49	38	36	30	
		1-1/2	38	36	30	32	30	25	
		1-1/4	32	30	25	24	16	13	
		1	24	16	13	19	10	8	
		3/4	19	10	8	15	8	6,5	
3	40	3	72	138	115	57	102	85	
		2-1/2	57	102	85	47	59	49	
		2	47	59	49	38	36	30	
		1-1/2	38	36	30	32	30	25	
		1-1/4	32	30	25	24	16	13	
4	40	4	97	246	205	72	138	115	
		3	72	138	115	57	102	85	
		2-1/2	57	102	85	47	59	49	
		2	47	59	49	38	36	30	
		1-1/2	38	36	30	32	30	25	
6	60	6	147	528	440	122	390	325	
		5	122	390	325	97	246	205	
		4	97	246	205	72	138	115	
		3	72	138	115	57	102	85	
		2-1/2	57	102	85	47	59	49	
8	60	8	187	780	650	147	528	440	
		6	147	528	440	122	390	325	
		5	122	390	325	97	246	205	
		4	97	246	205	72	138	115	
		3	72	138	115	57	102	85	
10	80	10	236	1152	960	187	780*	650*	
		8	187	780	650	147	528*	440*	
		6	147	528	440	122	390*	325*	
		5	122	390	325	97	246*	205*	
		4	97	246	205	72	138*	115*	
12	80	12	277	1656	1380	236	1152*	960*	
		10	236	1152	960	187	780*	650*	
		8	187	780	650	147	528*	440*	
		6	147	528	440	122	390*	325*	
		5	122	390	325	97	246*	205*	
14	100	14	316	2220	1850	-	-	-	
		12	277	1656	1380	-	-	-	
		10	236	1152	960	-	-	-	
		8	187	780	650	-	-	-	
		6	147	528	440	-	-	-	
16	100	16	356	2940	2450	-	-	-	
		14	316	2220	1850	-	-	-	
		12	277	1656	1380	-	-	-	
		10	236	1152	960	-	-	-	
		8	187	780	650	-	-	-	

NOTES * : - CV marked with * refer only to ANSI 900-1500; ANSI 2500 not available.
- Values above refer to trim with metal-to-metal sealing. For soft seat trim, reduce the corresponding Cv value by 15%.

FLOW RATE COEFFICIENTS-CV-MICROFLOW ANSI 150÷2500					
VALVE NPS [in]	STROKE [mm]	TRIM No.	SEAT DIAMETER [mm]	REGULATION CHARACTERISTIC	
				Linear	Equipcentage
3/4	25	1	6	1,5	1,5
		2		0,8	0,8
		3		0,5	0,5
		4		0,42	0,42
		5		0,25	0,25
		6		0,15	0,15
÷	25	7	4	0,08	-
		8		0,05	-
		9		0,042	-
		10		0,025	-
		11		0,015	-
		12		0,008	-
1	25	13	4	0,005	-
		14		0,0042	-
		15		0,0025	-
		16		0,0015	-

REGULATION CHARACTERISTIC



AVAILABLE ACCESSORIES: PNEUMATIC OR I/P (STD OR SMART) POSITIONER, REDUCTION FILTER, SOLENOID VALVE, LOCK-UP, LIMIT OR PROXIMITY SWITCHES, BOOSTER, ETC. OTHER SIZES ALSO AVAILABLE ON REQUEST